

CONTRACT: DA00445 WBS PROJECT: 2019CPT.01.14.20212.1, ETC.

STATE OF NORTH CAROLINA
DIVISION OF HIGHWAYS

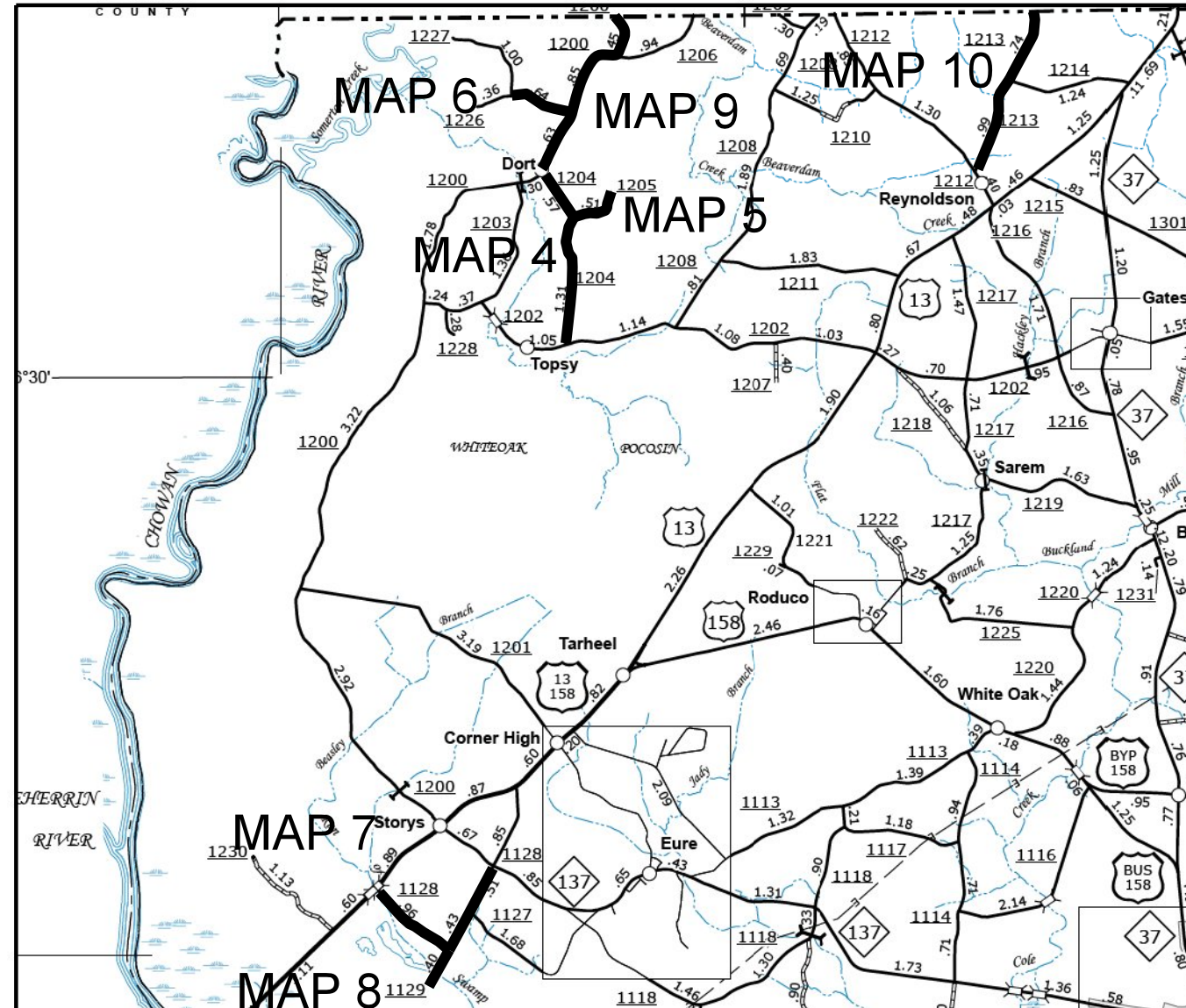
STATE	STATE PROJECT REFERENCE NO.	SHEET NO.	TOTAL SHEETS
N.C.	2019CPT.01.14.20212.1, ETC.	2	
STATE PROJ. NO.	F.A. PROJ. NO.	DESCRIPTION	
2019CPT.01.14.20372.1		MAPS 4-10	

GATES COUNTY

LOCATION:

<p>MAP 4 SR 1204 FROM SR 1200 TO SR 1202 MAP 5 SR 1205 FROM SR 1204 TO DEAD END MAP 6 SR 1226 FROM SR 1200 TO END PAVMT. MAP 7 SR 1128 FROM NC 137 TO US 13</p>	<p>MAP 8 SR 1129 FROM SR 1128 TO DEAD END MAP 9 SR 1200 FROM SR 1204 TO VA STATE LINE MAP 10 SR 1213 FROM SR 1212 TO VA STATE LINE</p>
--	--

TYPE OF WORK: ASPHALT SURFACE TREATMENT



NTS

PROJECT LENGTH

LENGTH OF ROADWAY PROJECT MAP 4 = 1.88 MI.
 LENGTH OF ROADWAY PROJECT MAP 5 = 0.51 MI.
 LENGTH OF ROADWAY PROJECT MAP 6 = 0.63 MI.
 LENGTH OF ROADWAY PROJECT MAP 7 = 1.90 MI.
 LENGTH OF ROADWAY PROJECT MAP 8 = 0.40 MI.
 LENGTH OF ROADWAY PROJECT MAP 9 = 1.93 MI.
 LENGTH OF ROADWAY PROJECT MAP 10 = 1.73 MI.

Prepared in the Office of:
DIVISION OF HIGHWAYS

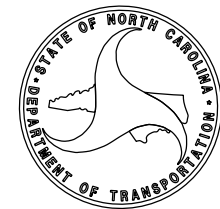
113 Airport Dr., Edenton NC, 27932

2018 STANDARD SPECIFICATIONS

S. P. FENWICK, PLS
DIVISION DESIGN ENGINEER

W.B. HOBBS, P.E.
DIVISION PROJECT TEAM LEAD

C.E. SLACHTA
DIVISION PROPOSALS ENGINEER



CONTRACT: DA00444 WBS PROJECT: 2019CPT.01.14.20212.1, ETC.

STATE OF NORTH CAROLINA
DIVISION OF HIGHWAYS

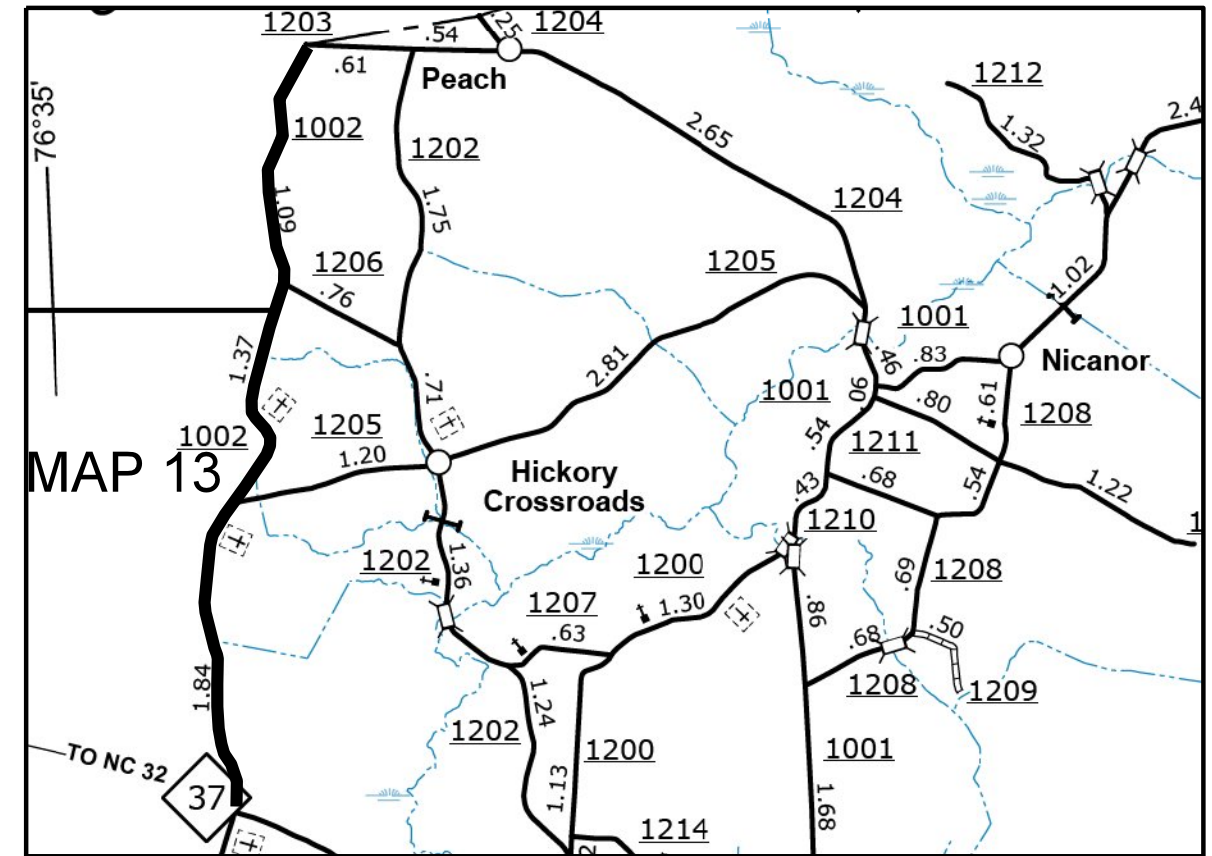
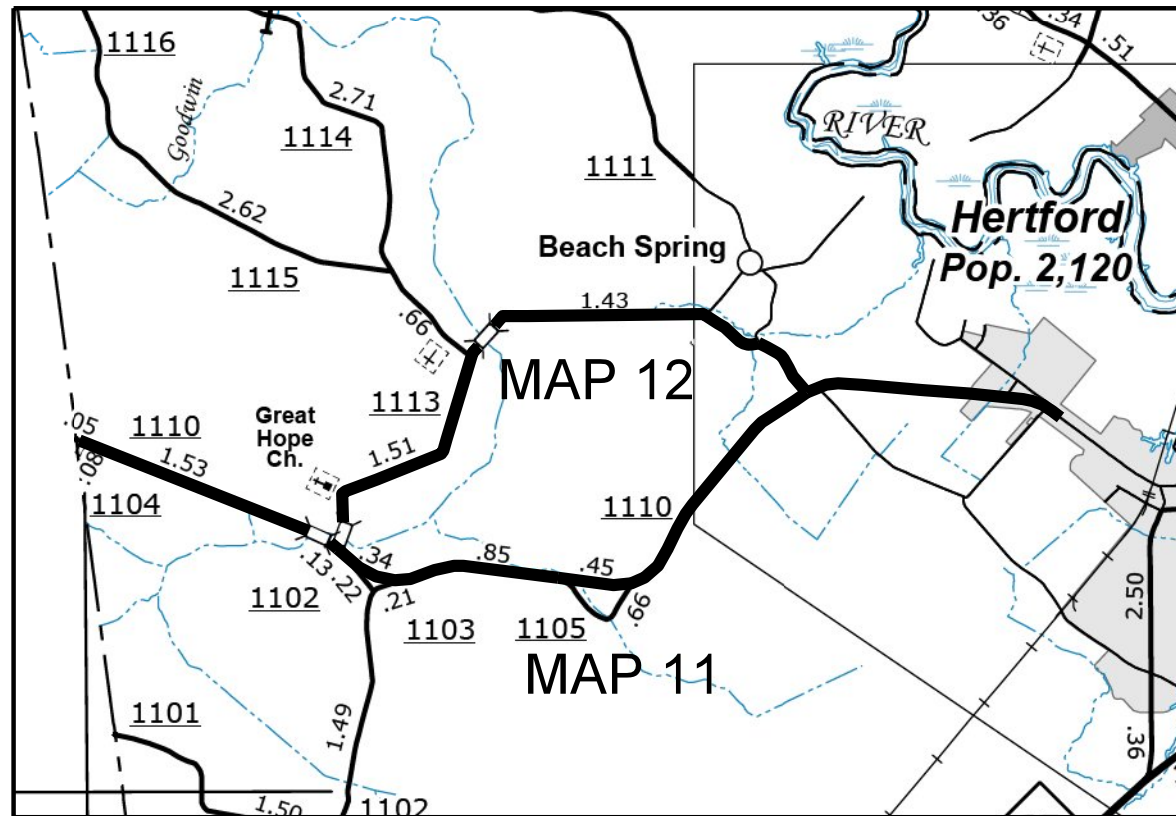
STATE	STATE PROJECT REFERENCE NO.	SHEET NO.	TOTAL SHEETS
N.C.	2019CPT.01.14.20212.1, ETC.	3	
STATE PROJ. NO.	F.A. PROJ. NO.	DESCRIPTION	
2019CPT.01.14.20722.1		MAPS 11-13	

PERQUIMANS COUNTY



LOCATION: MAP 11 SR 1110 FROM CHOWAN CO. TO BEGIN C&G
 MAP 12 SR 1113 FROM SR 1110 TO SR 1110
 MAP 13 SR 1002 FROM GATES CO. LINE TO NC 37

TYPE OF WORK: ASPHALT SURFACE TREATMENT

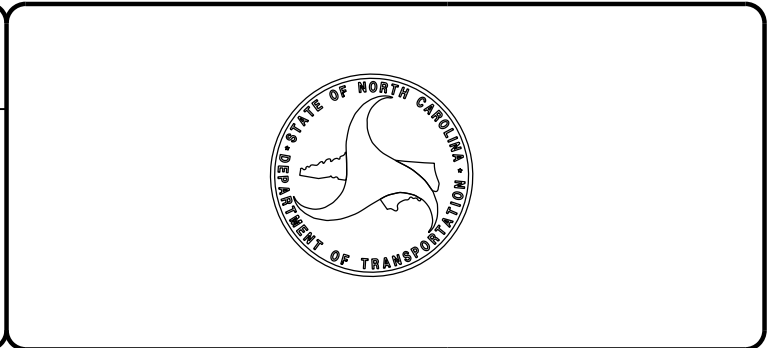


NTS

PROJECT LENGTH	
LENGTH OF ROADWAY PROJECT MAP 11 =	6.53 MI.
LENGTH OF ROADWAY PROJECT MAP 12 =	3.72 MI.
LENGTH OF ROADWAY PROJECT MAP 13 =	4.42 MI.

Prepared in the Office of:
DIVISION OF HIGHWAYS
 113 Airport Dr., Edenton NC, 27932

2018 STANDARD SPECIFICATIONS	
S. P. FENWICK, PLS DIVISION DESIGN ENGINEER	W.B. HOBBS, P.E. DIVISION PROJECT TEAM LEAD
	C.E. SLACHTA DIVISION PROPOSALS ENGINEER



P A V E M E N T S C H E D U L E

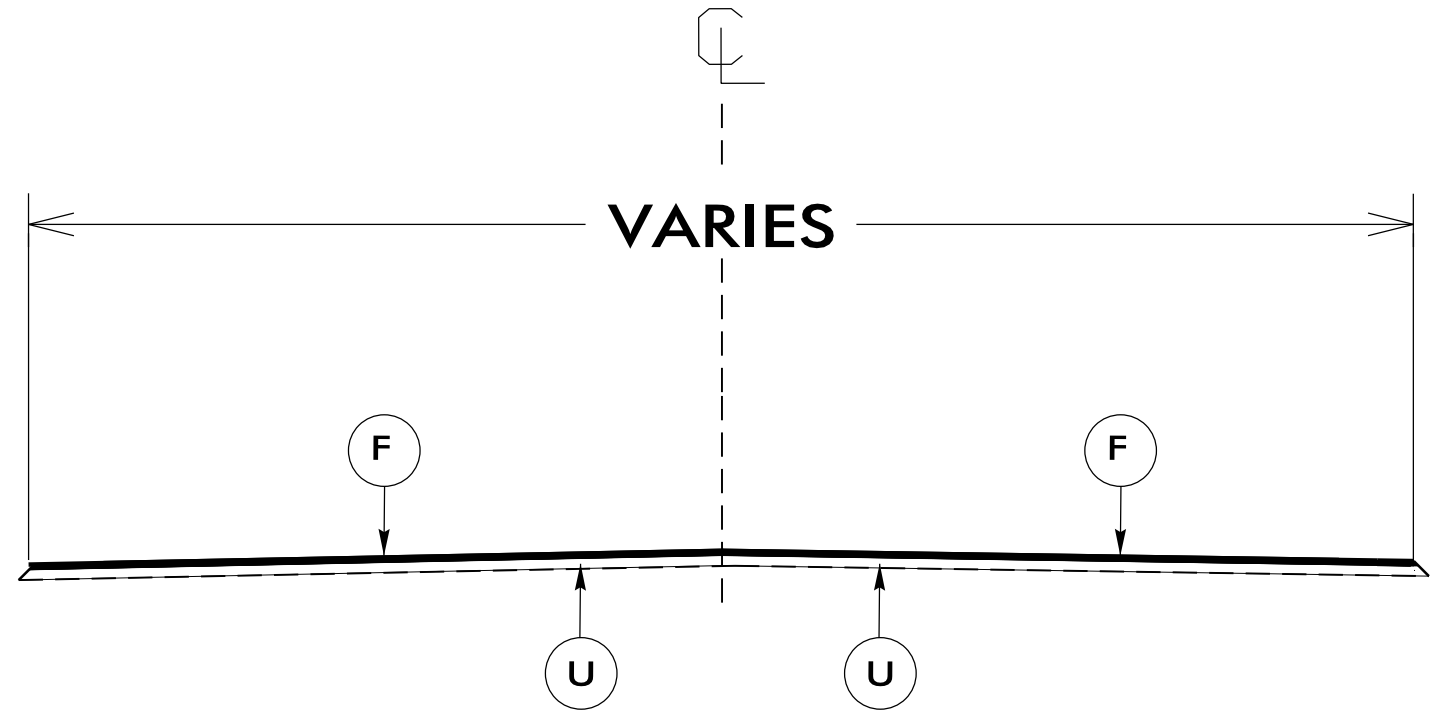
F	PROP. ASPHALT SURFACE TREATMENT, DOUBLE SEAL, AT AN APPLICATION RATE TO BE DETERMINED BY FIELD CONDITIONS IN ACCORDANCE WITH PROJECT SPECIAL PROVISIONS (SEE NOTES)
U	EXISTING PAVEMENT.

NOTES:

- *ALL PAVED S.R. ROADS TO BE TREATED TO THE ENDS OF THE RADII., OR AS DIRECTED BY THE ENGINEER
- *PAVEMENT MARKINGS TO BE PERFORMED BY OTHERS
- *ASPHALT SURFACE TREATMENT, DOUBLE SEAL CONSISTS OF TWO LAYERS OF TREATMENT:

 BOTTOM LAYER CONSISTS OF EMULSIFIED ASPHALT, GRADE CRS-2L AT A RATE OF APPROX 0.30 ± GAL/SY AND A LAYER OF 78M AGGREGATE AT A RATE OF APPROX. 18 ± LBS/SY.

 TOP LAYER CONSISTS OF EMULSIFIED ASPHALT, GRADE CRS-2L AT A RATE OF APPROX 0.25 ± GAL/SY AND A LAYER OF: $\frac{5}{16}$ " LIGHTWEIGHT AGGREGATE AT A RATE OF APPROX. 9± LBS/SY.
- *ALL AGGREGATE MATERIAL MAY BE STOCKPILED AT NCDOT MAINTENANCE FACILITIES AS APPROVED BY THE DEPARTMENT. THE RESIDENT ENGINEER'S OFFICE MUST BE CONTACTED PRIOR TO STOCKPILING STONE.
- *CONTRACTOR SHALL BE RESPONSIBLE FOR LOADING, HAULING, & PLACING ALL AGGREGATE MATERIAL.



TYPICAL SECTION NO. 1

USE WITH MAPS 1 - 13

03-JAN-2020 14:11 St. Sherrod\Division One Resurfacing & Retreatment Plans\2020-2021 AST\DA00445-District 18\3\Plans\AST Plans.dgn

NTS

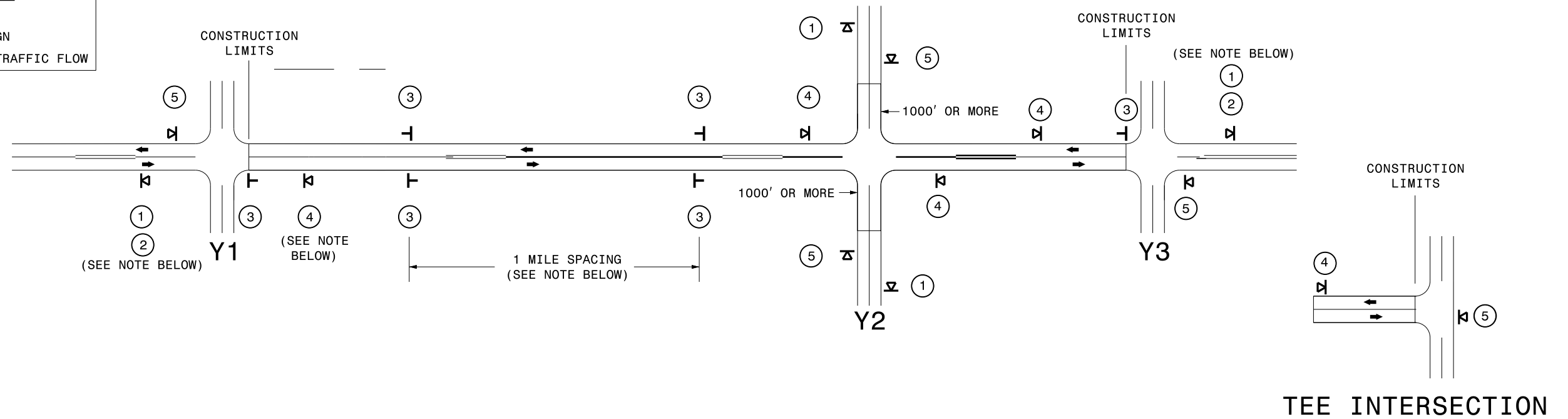
PROJECT NO.	SHEET NO.
2019CPT.01.14.20212.1, ETC.	8

SUMMARY OF QUANTITIES

PROJECT NO	COUNTY	MAP NO	ROUTE	DESCRIPTION	TYP NO	LANES	LANE TYPE	FINAL SURFACE TESTING REQUIRED	WARM MIX ASPHALT REQUIRED	LENGTH	WIDTH	MOBILIZATION	ASPHALT SURFACE TREATMENT, DOUBLE SEAL	EMULSION FOR ASPHALT SURFACE TREATMENT	WORK ZONE ADV/GEN WARNING SIGNING	TEMPORARY TRAFFIC CONTROL
										MI	FT	LS	SY	GAL	SF	LS
2019CPT.01.14.20212.1	Chowan	1	SR 1319 PARADISE RD	FROM SR 1316 TO BEGIN 3 LANE	1	2	2WU	NO	NO	4.37	20	1	52,974	31,785	134	1
2019CPT.01.14.20212.1	Chowan	2	SR 1290 OLD FERRY RD	FROM DEAD END TO SR 1218	1	2	2WU	NO	NO	0.36	20	*	5,924	3,554	40	*
2019CPT.01.14.20212.1	Chowan	3	SR 1291 HIDDEN COVE RD	FROM DEAD END TO SR 1290	1	2	2WU	NO	NO	0.15	20	*	2,610	1,566	40	*
TOTAL FOR PROJ NO. 2019CPT.01.14.20212.1										4.88			61,508	36,905	214	
2019CPT.01.14.20372.1	Gates	4	SR 1204 BYRUM RD	FROM 1200 TO SR 1202	1	2	2WU	NO	NO	1.88	20	*	24,609	14,765	40	*
2019CPT.01.14.20372.1	Gates	5	SR 1205 PARKER LANE	FROM SR 1204 TO DEAD END	1	2	2WU	NO	NO	0.51	20	*	6,834	4,100	40	*
2019CPT.01.14.20372.1	Gates	6	SR 1226 JERNIGAN LANE	FROM SR 1200 TO END PAVEMENT	1	2	2WU	NO	NO	0.63	20	*	9,092	5,455	40	*
2019CPT.01.14.20372.1	Gates	7	SR 1128 BARFIELD RD	FROM NC 137 TO US 13	1	2	2WU	NO	NO	1.90	20	*	25,693	15,415	40	*
2019CPT.01.14.20372.1	Gates	8	SR 1129 HORTON LANE	FROM SR 1128 TO DEAD END	1	2	2WU	NO	NO	0.40	20	*	4,694	2,817	40	*
2019CPT.01.14.20372.1	Gates	9	SR 1200 SAND BANKS ROAD	FROM SR 1204 TO VA STATE LINE	1	2	2WU	NO	NO	1.93	20	*	22,646	13,588	40	*
2019CPT.01.14.20372.1	Gates	10	SR 1213 LEES MILL RD	FROM SR 1212 TO VA STATE LINE	1	2	2WU	NO	NO	1.73	20	*	21,999	13,199	40	*
TOTAL FOR PROJ NO. 2019CPT.01.14.20372.1										8.98			115,567	69,339	280	
2019CPT.01.14.20722.1	Perquimans	11	SR 1110 CENTER HILL RD	FROM CHOWAN CO TO BEGIN CURB	1	2	2WU	NO	NO	6.53	20	*	85,119	51,071	262	*
2019CPT.01.14.20722.1	Perquimans	12	SR 1113 GREAT HOPE CH RD	FROM SR 1110 TO SR 1110	1	2	2WU	NO	NO	3.72	16-20	*	40,106	24,064	208	*
2019CPT.01.14.20722.1	Perquimans	13	SR 1002 COUNTY LINE RD	FROM GATES CO TO NC 37	1	2	2WU	NO	NO	4.42	18	*	50,075	30,045	166	*
TOTAL FOR PROJ NO. 2019CPT.01.14.20722.1										14.67			175,300	105,180	636	
GRAND TOTAL										28.53		1	352,375	211,424	1,130	1

SIGNING FOR ASPHALT SURFACE TREATMENT

LEGEND	
	PORTABLE SIGN
	STATIONARY SIGN
	DIRECTION OF TRAFFIC FLOW



MAINLINE (-L-) SIGNING

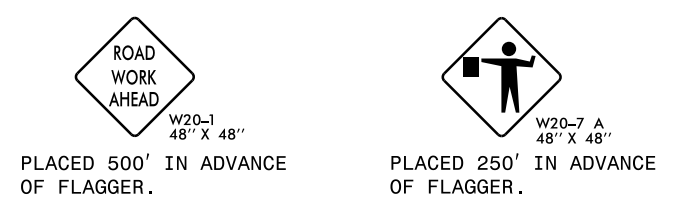
-Y- LINE SIGNING

SIGNING NOTES AND PLACEMENT PER DIRECTION	①		- PLACE 1000' PRIOR TO BEGINNING OF CONSTRUCTION LIMITS. ONLY USED ON -Y- LINES IF RESURFACING LIMITS EXTEND 1000' ALONG -Y- LINE.	
	②		- SIGN #2 ONLY USED WHEN RESURFACING LIMITS ARE 2 OR MORE MILES IN LENGTH. ROUND UP TO THE NEAREST WHOLE NUMBER. DO NOT USE FRACTIONAL OR DECIMAL NUMBERS.	
	③		- ALTERNATE THE FOLLOWING TWO SIGNS: - STARTING WITH "LOOSE GRAVEL" (W8-7) FOLLOWED BY "UNMARKED PAVEMENT". - PLACE INITIALLY AT THE CONSTRUCTION LIMITS AND SPACED 1 MILE APART THEREAFTER.	
			- AT TEE INTERSECTIONS INSTALL INITIALLY 0.5 MILE FROM INTERSECTION AND SPACE 1 MILE APART THEREAFTER.	
	④		- THESE ARE FOR -Y- LINES THAT ARE "THROUGH" ROADWAYS. DEAD END AND SUBDIVISION ROADS ARE NOT "THROUGH" ROADWAYS. - INSTALL 500' +/- FROM EACH -Y- LINE APPROACH AS SHOWN ABOVE. - FOR MULTIPLE -Y- LINES THAT ARE SEPARATED BY 0.25 MILES OR LESS, TREAT AS A SINGLE UNIT AND INSTALL WITHIN 500' OF EACH APPROACH. - A MAXIMUM OF 2 SIGN SETS PER MILE. DO NOT INSTALL WHEN -Y- LINES ARE WITHIN 0.5 MILES FROM "END ROAD WORK" SIGN.	
⑤		PLACE 500' FOLLOWING THE END OF CONSTRUCTION LIMITS OR AS SHOWN WHEN WORK ENDS AT A 3-WAY TEE INTERSECTION.		
<p>THE ABOVE SIGNS ARE ALL THAT ARE REQUIRED FOR A CONTRACTOR TO BEGIN A RESURFACING CONTRACT. ANY ADDITIONAL SIGNS REQUESTED BY NCDOT DIVISIONS SHALL BE INSTALLED WITHIN 7 BUSINESS DAYS OF THE START OF CONTRACT WORK.</p>				
<p>FOR AST RESURFACING MAPS WITH CONSTRUCTION LIMITS LESS THAN 2 MILES IN LENGTH, USE A STATIONARY "LOOSE GRAVEL" SIGN AT THE BEGINNING CONSTRUCTION LIMIT FOLLOWED BY AN "UNMARKED PAVEMENT" SIGN MIDWAY THROUGH AND AN "END ROAD WORK" SIGN AT THE END CONSTRUCTION LIMIT.</p>				

STATIONARY SIGNING NOT REQUIRED FOR THE FOLLOWING -Y- LINE CONDITIONS:

- 1) LESS THAN 1000' OF RESURFACING ALONG -Y- LINE
- 2) SUBDIVISION ROADS
- 3) DEAD END ROADS

WHEN PAVING/CONSTRUCTION ACTIVITIES PROCEED ACROSS AN UNSIGNED -Y- LINE, PORTABLE ADVANCE WARNING SIGNS SHALL BE USED ALONG THE -Y- LINE AS SHOWN BELOW. REMOVE UPON COMPLETION OF WORK.



**MAPS LESS
THAN 2 MILES**

**ADVANCE WARNING SIGNS
FOR
2-LANE ROADWAY
ASPHALT SURFACE TREATMENT**

07-MAR-2019 07:43 Shared\Division One Resurfacing & Retreatment Plans\2019-2020 AST Maps\DA00445_District 183\Plans\AST Plans.dgn
25-c:\maps-div\CC-DICAD293275
at DICAD293275